

Spotlight on

Tresillian QEII Family Centre, ACT



TOP:

It was an honour to welcome the ACT Chief Minister, Andrew Barr and Minister for Health, Rachel Stephen-Smith MLA to Tresillian's QEII Family Centre on 19th September, 2024. We were delighted to learn their government remains committed to expanding maternity and support services including increasing access to evidence-based prenatal and postnatal parenting programs and providing more specialist services for parents experiencing perinatal mental illness, including the establishment of a 6-bed perinatal mental health residential unit. Pictured left is the team from the Tresillian QEII Family Centre with Chief Minister, Andrew Barr (third from left), next to Tresillian CEO, Rob Mills.

LEFT:

In February 2025, Tresillian's QEII Family Centre, ACT, hosted the SCORPIO (Structured, Clinical, Objective, Referenced, Problem-orientated, Integrated, Organised) Breastfeeding Train the Trainer Workshop for 20 ACT health professionals. The day was an opportunity for clinical and MACH managers across the ACT to come together to discuss breastfeeding support, engage with their teams, and explore the resources Tresillian has to offer.

BELOW:

On 19th November, 2024, The First 1000 Days Conference was staged at the Rex Hotel in the ACT, in partnership with Marymead CatholicCare and Perinatal Wellbeing Centre and generously sponsored by the ACT Government.



ABOVE:

Congratulations to Stephanie Smith RN (pictured 2nd from the left) from Tresillian's QEII in ACT who was honoured with a 'Consumer Recognition Award' at the 2025 ACT Nurses & Midwives Excellence Awards. Pictured L to R Dani Levis, Executive Director Clinical Services, Stephanie Smith RN, Ashlee Perry QEII Nurse Unit Manager, and Michelle Stedman, Operational Nurse Manager QEII.



Report from

PIEC-MH Service

Tanya Bruning

Parent-Infant and Early Childhood Mental Health



This year saw continued growth and innovation across Tresillian's Parent, Infant and Early Childhood Mental Health (PIEC-MH) service. Over 5,000 individual mental health appointments were delivered to parents and carers across residential, day stay and outpatient settings, alongside more than 350 therapeutic group sessions. This represents a significant year-on-year increase in both volume and duration of care, reflecting the team's shift toward longer, evidence-informed therapeutic engagement. Despite several staffing vacancies throughout the year, the team maintained a high level of service delivery, underpinned by clearer referral criteria and a focus on outcome-driven care.

In response to growing complexity in parent presentations, the team introduced new data collection systems using REDCap to capture clinical outcomes and inform quality improvement. Preliminary data suggests high levels of complex trauma and parenting stress among clients, reinforcing the need for tailored, relationship-focused interventions, which aren't offered by primary or tertiary services in the community.

Clinical innovation continued with the development and rollout of the DBT-informed Parent-Child Nurture and Regulation Group. The program has attracted a \$300K grant from the Paul Ramsay Foundation for a randomised control trial in partnership with the Human Technology Institute (UTS).



The team also progressed several strategic initiatives, including finalisation of an updated PIEC-MH service model, establishment of a Lived Experience Advisory Panel, and the development of a combined photography and video policy to support the therapeutic use of the Marte Meo method. Regional access was enhanced through implementation of digital referral pathways and the launch of a rural psychiatry telehealth pilot.

Knowledge-sharing and sector engagement remained a priority. Tresillian staff presented at national conferences including AAIMH and I-CEPS, sharing insights from clinical

practice and service development. Ongoing collaborations with organisations such as UTS, Monash University and the Paul Ramsay Foundation supported continuous improvement and innovation in service delivery.

Overall, this has been a year of strategic growth, clinical advancement and deeper integration of mental health support across Tresillian services. The PIEC-MH team continues to strengthen Tresillian's commitment to evidence-based, trauma-informed, and family-centred care for parents and young children across NSW and the ACT.



Tanya Bruning presenting at the Key Stakeholders Event in Tasmania, in August, 2024.

Research at Tresillian

Tresillian Family Care Centres is committed to supporting, undertaking, and disseminating research that (1) increases knowledge about child and family health and nurturing parent-child relationships, and (2) contributes to the development of evidence-based services for children and families. Tresillian works in partnership with several universities across New South Wales and with other research entities within the Sydney Local Health District and beyond. Tresillian is committed to extending research partnerships and collaboration, and to embedding research into all service delivery and publishing results (Strategic Plan 2021-2024).

Research at Tresillian was boosted in the 2024-2025 Financial Year by two successful collaborative grant applications. The first was a Ramsay Hospital Research Foundation Translational Challenge grant totalling \$400,000, with Monash University and Masada Early Parenting Centre, for a project entitled Collaboration between a public and a private early parenting centre to improve

social disadvantage though continuous quality improvement. The second was a Paul Ramsay Foundation grant totalling \$300,000 in collaboration with the Human Technology Institute at University of Technology Sydney. This grant will fund a rigorous randomised clinical trial evaluating Tresillian's innovative new therapeutic parent group program, Parent-Child Nurture and Regulation.

Key Research Partners

Tresillian is currently engaged in research partnerships with the following entities:

- Monash University
- University of Technology, Sydney
- Western Sydney University
- Sydney University
- Macquarie University
- Charles Sturt University
- Southern Cross University
- Woolcock Institute
- University of Wollongong
- Sydney Local Health District
- Northern NSW Local Health District
- Bulgarr Ngaru Aboriginal Medical Corporation
- Healthy North Coast
- Masada Early Parenting Centre, Ramsay Healthcare

Current Research

1. Dwyer, A., Maxwell, A-M, Cripps, S. & Lopatnikova, A. Comparing intervention outcomes from two therapeutic groups for parent-child dyads impacted by parental disturbances of self-organisation (DSO): A Bayesian Adaptive Trial. (Preparation phase)

2. Fisher, J., Stanzel, K., Dwyer, A. & Maxwell, A-M. Collaboration between a public and a private early parenting centre to improve social disadvantage though continuous quality improvement. (Preparation phase)

3. Maxwell, A-M., Wallbank, A., De-Belin, A., Mon, A. M. Investigating early discharge in a residential parenting service. (Data collection phase)

4. Katz, I., Chow, J., Blunden, L-A., Thomson, C., Macvean, M., Sartore, G., Cann, W., Avdagic, E., Tani, M. Virtual Residential Parenting Services: Evaluation. (Data collection and analysis phase)

5. Hawthorne, J. Yu, N., Fairbrother, G. Azar, M., Ryan, L., Ozbek, S., Maxwell, A-M. Effectiveness of a mindfulness meditation-based intervention among post-natal mothers attending an early parenting service. (Data collection phase)

6. Sherwood, J., Grant, J., Dutton, P., Maxwell, A-M., Davis, D., Nigro, O., Johnson, L. A community co-designed evaluation of the First 2000 Days Program and Child and Family Wellbeing Hub in Grafton NSW. (Write-up phase)

7. Opie, J., McIntosh, J., Hooker, L., De-Belin, A., Smit, J., & Maxwell, A-M. My Early Relational Trust-Informed Learning (MERTIL) for Parents: Understanding parental and practitioner perspectives before and after a brief attachment-informed and trauma-informed online teaching module. (Data analysis phase)

8. Gordon, C., Appleton, J., Denney-Wilson, E., Brown, N., Grant, J., Maxwell, A-M., Rahimi, M., Ma, R. Maternal and infant mental health and sleep study. (Data analysis and write-up phase)

9. Appleton, J., Denney-Wilson, E., Cheng, H., Reilly, N., Taki, S., Stockton, D., De-Belin, A., & Maxwell, A-M., Evaluation of the Tresillian SleepWellBaby app for impact, acceptability, and efficacy of screening, digital support, and stepped care. (Write-up phase)

10. Bailey S., Hutchinson M., Stockton D., & Cormick, J. Tresillian 2U - The early years parenting service longitudinal study (PhD; write-up phase)

11. Dickinson M., Duffield C., Travaglia J., & Bichel-Finlay J. Acceptability and responsibility for quality in healthcare (PhD; write-up phase)

12. Maxwell, A-M., Crane, M., McMahon, C., Lao, J. Enhancing resilience in the early parenting workforce & harnessing expertise for intervention redesign. (Write-up phase)

13. Stockton D., Dickinson M., Appleton, J. Travaglia J. Debono D: Tresillian Regional Family Care Centres: Building stronger families and communities. (Write-up phase)

Publications

Appleton, J., Fowler, C., Latouche, L., Smit, J., Booker, M., & Fairbrother, G. (2025). Evaluation of group therapy intervention for anxiety and depression in the postnatal period. *Maternal & Child Health Journal*. <https://doi.org/10.1007/s10995-025-04076-9>

Appleton, J., Reilly, N., Fowler, C., Elliott, D., & Denney-Wilson, E. (2024). Emotional health screening of mothers, preliminary validation of a 3-item instrument:

A research brief. *Applied Nursing Research*, 78, Article 151812. <https://doi.org/10.1016/j.apnr.2024.151812>

Bailey, S., Hurley, J., Plummer, K., Hutchinson, M. (2024). Specialist early parenting intervention: Effectiveness of a novel nurse-led approach for rural families. *Journal of Pediatric Nursing*, 78. 142-148. <https://doi.org/10.1016/j.pedn.2024.06.013>

Watkins, R., Schaffarczyk, K., & Artesano, J. G. (2024). An evaluation of the use of a "Short Moment of Intensive Training" (SMIT) in delivering trauma nursing education. *Health Education in Practice: Journal of Research for Professional Learning*, 7(1). <https://doi.org/10.33966/hepj.7.1.18650>

Conference & Webinar Presentations

NATIONAL

Byron, B., Zimmer-Gembeck, M., Kohlhoff, K., Maxwell, A-M., Buchanan, B., & Hawkins, E. (2024, November 7-9). Construct validity of the Composite Caregiving Questionnaire (CCQ): An exploratory and confirmatory factor analysis [Poster session]. Australian Association for Infant Mental Health Conference, Sydney, NSW, Australia.

Dwyer, A. (2024, November 7-9). Trauma or depression? Exploring contributions to parent-infant relationships concerns in an early parenting services cohort [Oral presentation]. Australian Association for Infant Mental Health Conference, Sydney, NSW, Australia.

Dwyer, A. & Maxwell, A-M. (2024, November 7-9). Statistical tricks and misses: Ensuring integrity, transparency, and clarity in data collection and reporting [Poster session]. Australian Association for Infant Mental Health Conference, Sydney, NSW, Australia.

Dwyer, A. & Sved-Williams, A. (2024, November 7-9). Emotional dysregulation and the parent-infant relationships: Can we make changes? [Poster session]. Australian Association for Infant Mental Health Conference, Sydney, NSW, Australia.

Fulton, B. & Adamcewicz, M. (2024, November 7-9). Being-with vulnerable infants and families: The unique role of the Occupational Therapist [Oral presentation]. Australian Association for Infant Mental Health Conference, Sydney, NSW, Australia.

Kotowski, J. (2025, June 18-20). A new residential parenting unit and its novice nurses: A tailored training program [Poster session]. National Nurse Education Conference, Sydney, NSW, Australia.

Maxwell, A-M. (2024, August 22). Mental Health in Collaborating to promote health and wellbeing in the first 2000 days: Strategies and co-benefits to strengthen connections across the early years sector [Webinar]. Epoch - Connect: Community of Practice of Researchers in Early Prevention of Obesity in Childhood.

Maxwell, A-M. (2024, August 23). Circle of Security Parenting (COS-P) in attachment-based interventions: A tasking plate for clinicians [Webinar]. Healthy Attachment Australia New Zealand.

Maxwell, A-M., Hawkins, E., Kohlhoff, J., & Dwyer, A. (2024, November 7-9). Measuring attachment-supportive parenting in clinical practice: An introduction to the Composite Caregiving Questionnaire [Workshop]. Australian Association for Infant Mental Health Conference, Sydney, NSW, Australia.

Wallbank, A., Crawford, T., Bryce, W., Mejaha, K., Mahon-Daly, S., & Maxwell, A-M. (2025, May 1-2). Engaging fathers in a parenting service: Tresillian's Circle of Security Parenting group for dads [Oral presentation]. Australian Fatherhood Research Symposium, Melbourne, VIC, Australia.

Wallbank, A. & DeBelin, A. (2024, August 29-31). Resilience and recovery through curiosity and playfulness [Oral presentation]. Maternal, Child & Family Health Nurses Australia (McFHN) Conference, Brisbane, QLD, Australia.

Wright, J. (2025, June 18-20). Creating a guide and supporting regional day services staff to facilitate an Understanding Your Toddler (children aged from 1 -3 years) parenting group [Poster session]. National Nurse Education Conference, Sydney, NSW, Australia.

INTERNATIONAL

Crawford, T., De-Belin, A. & Dwyer, A. (2025, June 4-7). Building trust, leading change: A leadership model

for effective service transformation. International Congress on Evidence-Based Parenting Support, online.

Maxwell, A-M., Hawkins, E., Byron, B., Kohlhoff, J., & Dwyer, A. (2025, June 4-7). Measuring outcomes of relationship-focused parenting programs: An introduction to the Composite Caregiving Questionnaire [Symposium]. International Congress on Evidence-Based Parenting Support, online.

Bailey, S. (2025, June 17-20). Realist evaluation of a novel specialist early parenting service for rural families: Mechanisms of influence [Podium presentation]. International Family Nursing Conference, Perth, WA, Australia.



“At Tresillian Nepean Residential, the nurses were supportive and informative, and the facilities were good. My daughter responded well to the strategies put in place for her. I’m so thankful I gave it a try”.

Report from the Chief Operating Officer

Peter Hinrichsen



It has been an exciting year at Tresillian, marked by structural change, growth, and a continued commitment to excellence in care. In November 2024, I commenced as Tresillian's first Chief Operating Officer, a newly established role that reflects the organisation's strategic direction and evolving operational needs. This role brings together several key corporate portfolios previously managed across the executive team and a soon to be established People and Culture Directorate.

Organisational Growth and Infrastructure Development

Since commencing, I have had the privilege of overseeing a number of capital and planning projects. These include the renovation and refurbishment on our Nepean site, completion of a solar system at Wollstonecraft, and strategic planning for our new facility in Launceston, Tasmania. Each of these projects has been designed with the aim of improving access, safety, and client experience, while future-proofing our services for growing and changing communities.

In addition, visits to many of our regional sites have provided valuable insights into the unique needs of the services and local communities they serve as well as informed potential opportunities for Tresillian's continued enhancement of service provision.



Quality, Safety and Client Experience

In October 2024, Tresillian underwent accreditation with the Australian Council on Healthcare Standards (ACHS) against the National Safety and Quality Standards (2nd edition). I am pleased to report that we achieved a full three-year accreditation with no "not met" recommendations - an outstanding result and a testament to the dedication and professionalism of our staff.

Client satisfaction remains consistently high across all areas of the organisation. From July 2024 to June 2025, Tresillian recorded an overall satisfaction rating of 91%, with Residential Services at 88.6%, Day Services at 93.2%, and Regional Services at 92.7%. These excellent outcomes are further supported by our Net Promoter Score (NPS) of 72.7, a world-class rating indicating strong client loyalty and confidence in our services.

We continue to embed a strong culture of safety and transparency. Incident reporting increased by 39.7% this year, largely due to increased service activity and a strengthened reporting culture. Importantly, there were no Harm Score 1 or 2 incidents reported. The adoption of the Tendable platform has enabled more consistent auditing across corporate and clinical domains, enhancing our capacity to monitor and improve performance.

The establishment of our Consumer Liaison Group further supports our commitment to client-centred care, bringing the voice of families directly into the heart of our service planning and improvement processes.

Health Informatics Team

The Health Informatics team have been busy preparing Tresillian for the adoption of SDPR, the State-wide Single Digital Patient Record, with our sites located within the Hunter New England LHD (Armidale, Muswellbrook, Taree) set to go live as part of the first phase of the NSW Health Roll out in early 2026, followed closely by Northern NSW

and Mid North Coast LHDs in late 2026.

Another change the team have been managing is the transition of the video conferencing platform to Healthdirect's Video Call solution. This is an e-Health initiative to standardise virtual care delivery across NSW.

The team have also been reviewing and evaluating a clinical information system to facilitate operations in the Launceston Tasmania site, setting out system requirements and roll-out plans within a new service setting.

On top of this, ongoing work continues in ACT to optimise and enhance the usage of DHR, the Digital Health Record.

Workplace Health and Safety

In 2024, Tresillian successfully completed both the NSW Health WHS Audit and Security Improvement Audit. We performed strongly in both, confirming our robust systems in place. Improvement plans are now being implemented to further strengthen our compliance and staff safety, with particular attention to residential environments, environmental

cleaning, food safety, and infection prevention in the post-COVID-19 landscape.

Guthrie Early Learning Centre

Guthrie has had a dynamic and successful year, delivering high-quality early childhood education aligned with the Early Years Learning Framework and National Quality Standards. The Centre maintained full enrolment capacity (42 children per day), following several years of disruption due to COVID-19 and construction at Wollstonecraft.

In a challenging early education sector environment, Guthrie responded proactively to changes stemming from the federal government's Wage Retention Grant. After careful analysis, Tresillian opted to self-fund staff wage increases, rather than participate in the grant scheme, ensuring educator wages increased by 10% in January 2025 and a further 5% planned in 2026. We are proud that this decision supported staff wellbeing and retention—while also retaining every enrolled family.

This year, Guthrie was once again recognised for its excellence in education, community engagement,



During May, we celebrated Nurses and Midwives right across Tresillian to recognise the vital role they play at Tresillian. At Tresillian Wollstonecraft, the children at Guthrie Early Learning Centre prepared some beautiful drawings and a song for the nurses. Pictured (2nd from left) is Rob Mills CEO with Peter Hinrichsen, COO, Kylie Choi NUM, Day Services and Dani Levis, EDCS, with members of the nursing team and the children from Guthrie.



“The staff are amazing here and really have helped me understand Ruby’s needs. Also loved Jules approach to mental health and her techniques, something new to help me deal with my anxiety”.

and sustainability. Highlights include the publication of a children’s book for NAIDOC Week, awards from the North Sydney Council Garden Competition, and the continuation of initiatives like Munch and Move and local community partnerships.

Guthrie was also successful in its application for a Community Building Partnership Grant from the State Government and awarded \$23,366 to meet the cost of soft-fall replacement for a large part of the play area.

Special Projects and Environmental Sustainability

Under the leadership of our Special Projects Manager, Rebecca Love, Tresillian has advanced several strategic initiatives. Key highlights include:

- Nepean Residential Unit Renovation – completed with staff and client input.

- Digital Audit Expansion – successful addition of corporate audits through Tendable platform.
- Referral System Improvements – in partnership with the Centralised Intake Unit and Parent Help Line.
- Sustainability Leadership – through the Waste Management Working Party, resulting in:
- Enhanced waste stream solutions and eco-product recommendations.
- Installation of a 62kW solar panel system at Wollstonecraft, producing 83MWh annually (equivalent to avoiding 28,292kg of coal per year), with a payback period of three years.

Rebecca was also appointed as Commissioning Manager for

Tresillian Launceston, ensuring readiness for our October 2025 launch. She also completed a Graduate Diploma of Public Health.

Looking Ahead

This year has been one of growth, reflection, and future-focused investment. From significant capital developments to service innovation and development of digital strategy, our work is grounded in Tresillian’s enduring commitment to families, staff wellbeing, and quality care.

As we look ahead to the opening of Tresillian Launceston and the ongoing evolution of our services across NSW and beyond, I extend my sincere thanks to our staff, Executive Team, Board, and partners. Together, we are building a stronger, more connected Tresillian, one that continues to meet the needs of families now and into the future.

Financial Report

Christina Hall

Chair Finance, Audit & Performance Committee



In the financial year 2024- 2025, Tresillian recorded a total revenue of \$39.7 million. Government funding constitutes a significant portion of this, accounting for 77% of total revenue, which increased by 7% compared to FY2023-2024.

The total expenditure on programs and activities for the year was \$39.6 million and the operating surplus for the year was \$ 151 thousand .

We are pleased to announce that NSW Health have extended its funding for a further 4 years to support families across regional communities. This continued partnership ensures the ongoing operation of Tresillian’s 7 Regional Family Care Centres, 5 Regional Tresillian 2U Mobile Vans, and the 4 residential beds based at Macksville Hospital. In addition, NSW Health also extended funding for the Virtual Residential Parenting Service (VRPS) for a further 5 years for \$7 Million.

Donation and sponsorship revenue for the year was \$1.8 million, and we are grateful for our generous donors, regular givers, clubs, local councils, charitable trusts and sponsors for their ongoing support to Tresillian. We would like to particularly acknowledge the support from donors to procure a Tresillian 2U Mobile early Parenting service Van for our Launceston services commencing in 2025.

The net assets of Tresillian remain at \$19.4 million. Current assets being cash at bank, current receivables and financial investments remain at \$11.3 million. Non-Current Assets include financial investments of \$4.4 million and property, plant and equipment of \$17.8million. The current liabilities include creditors and contract liabilities of \$5.2 million, and provision for future staff entitlements of \$ 8.7 million.

As Australia’s largest provider of early parenting services, Tresillian would like to acknowledge and thank our valued partners NSW Health, Sydney Local Health District (SLHD), ACT Health, Tasmania Department of Health and our corporate partners for their ongoing support, which enables us to remain committed to our vision of “ensuring every child has the best start in life”

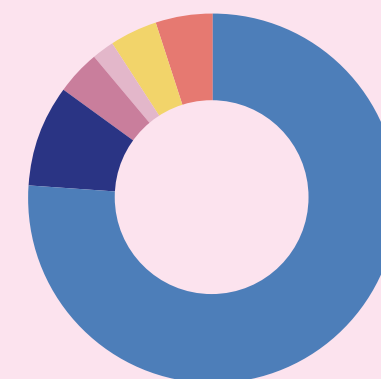
The Finance, Audit and Performance Committee would like to acknowledge the dedication and commitment of Tresillian’s outgoing Chair, Peter Quinn, for his outstanding service to Tresillian over 16 years.

I would also like to thank my colleagues on the Tresillian Board and the members of all Committees for their ongoing and valued support.

Christina Hall

Where our Money came from

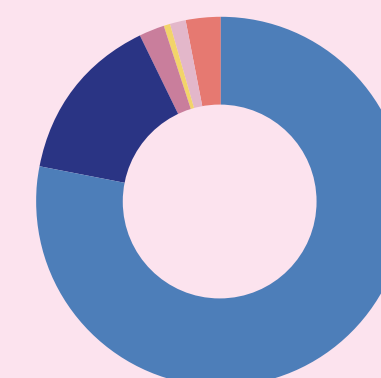
(\$39.7 million)



- Government Funding
- Patient Fee Revenue
- Child Care Fees
- Investment Income
- Other Service Fees
- Sponsorship and Donations

How our Money was used

(\$39.6 million)



- Employee Related Costs
- Goods and Services
- Repairs and Maintenance
- Contributions Other Entities
- Education
- Depreciation, Amortization and Finance Costs

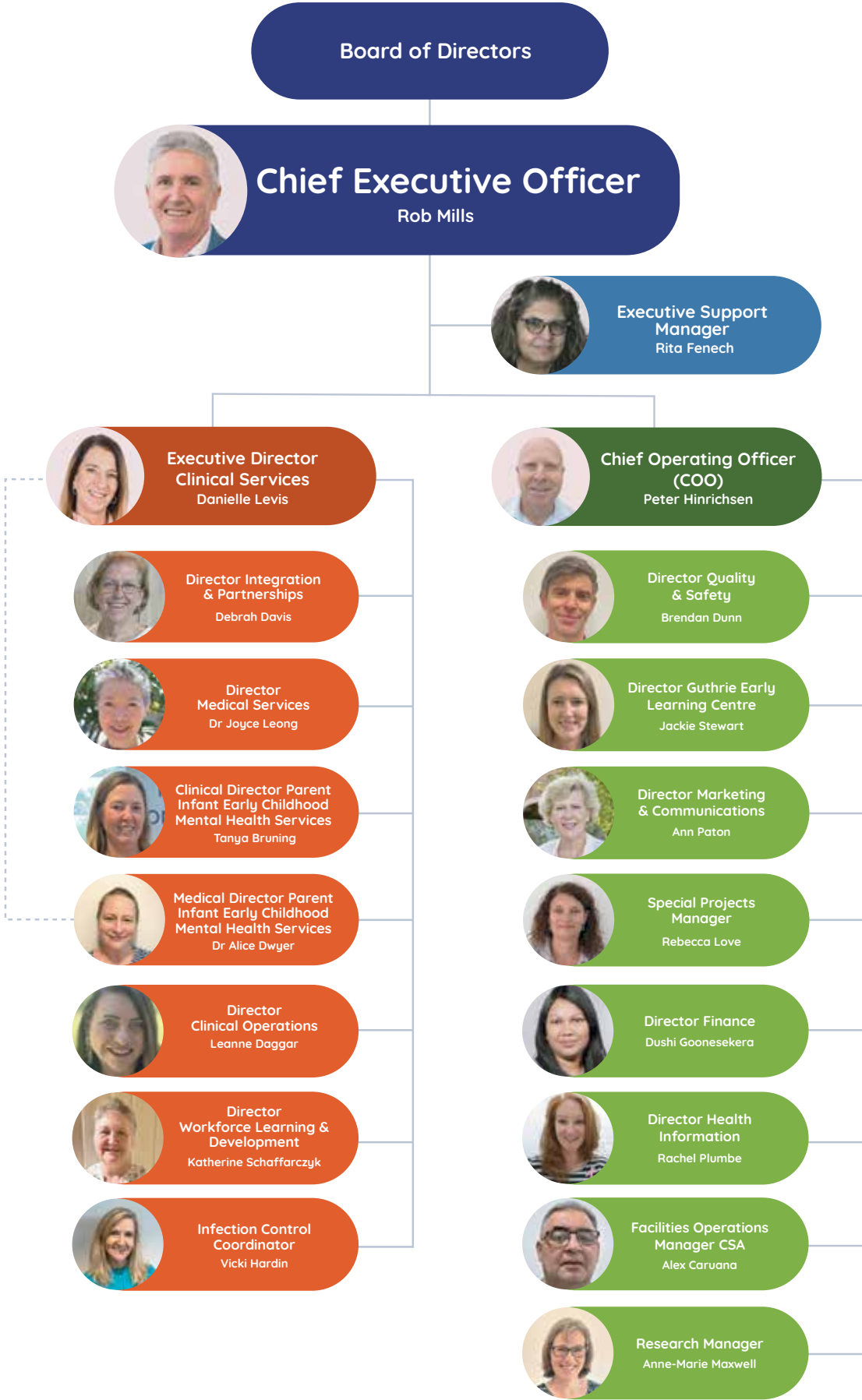
Financial Report

Financial Performance and Position			
The table below is a summary of our Income, Expenditure and Financial Position for the Year Ended 2025 with comparative.			
	2025	2024	Increase/(Decrease)
	\$	\$	\$
Total Revenue	39,751,916	47,221,690	(7,469,774)
Total Expenses	39,601,287	39,470,704	130,583
Net Surplus /(Deficit)	150,629	7,750,986	(7,600,357)
Current Assets	11,349,948	14,056,796	(2,706,848)
Non - Current Assets	22,288,535	18,670,857	3,617,678
Total Assets	33,638,483	32,727,653	910,830
Current Liabilities	13,973,240	13,197,599	775,641
Non-Current Liabilities	187,820	203,260	(15,440)
Total Liabilities	14,161,060	13,400,859	760,201
Net Assets	19,477,423	19,326,794	150,629

Revenue over last 6 years					
2025	2024	2023	2022	2021	2020
39,751,916	47,221,690	36,992,937	33,164,104	28,558,985	28,158,437
Net assets over the last 6 years					
2025	2024	2023	2022	2021	2020
19,477,423	19,326,794	11,575,808	10,168,889	9,030,479	8,125,717

Tresillian Family Care Centres financial records for the year ended 30 June 2025 were audited by Grant Thornton Australia in accordance with Australian Accounting Standards and the Australian Charities and Not for Profits Commission (ACNC) Regulation. A full copy of Tresillian Family Care Centres Annual Financial Report is available free of charge by writing to The Chief Executive Officer, Tresillian, Locked Bag 1003,Campsie, NSW,2194 or direct from the ACNC website www.acnc.gov.au

Organisational Structure



Executive Team

Chief Executive Officer Adjunct Associate Professor Robert Mills

RN, RM, MPH & FAICD

Robert is a Registered Nurse and Midwife with over 35 years' experience working in the speciality field of maternal & child health, early parenting services, and he holds a Masters of Public Health. Robert has been the CEO at Tresillian since 2013 and during his tenure, he has rapidly expanded the service over the last 8 years, with an additional 18 new Tresillian centres across regional New South Wales and the Australian Capital Territory. In May 2024, the Tasmanian Government announced the rollout of Tresillian services in Launceston, Tasmania, which will open in late 2025.

Robert is on the Board of the Australasian Association of Parenting and Child Health Inc.; the Dean's Advisory Board University of Technology Sydney (UTS); the PREPARE Foundation (Birthing Dads) and the NSW Health Services Association Board.

Robert is an Adjunct Associate Professor of Industry with the University Technology Sydney (UTS), a Fellow of the Australian Institute of Company Directors (AICD) and is an accredited Assessor with the Australian Council on Healthcare Standards (ACHS).

Executive Director of Clinical Services Ms Danielle Levis

RN

Danielle has over 30 years nursing experience and has held senior leadership roles in health care for 12 years, in both the public and private sectors.

Danielle worked for 21 years in Western Sydney Local Health District in various positions in the Division of Surgery and Anaesthetics. She held the position of Deputy Director of Nursing and Midwifery, Westmead Hospital before moving to Blacktown Mt Druitt hospitals as the Director of Nursing and Midwifery. Danielle was involved in the redevelopment at Westmead Hospital and commissioned Stage 2 of the Blacktown Hospital redevelopment. She was also the Director of Clinical Services at North Shore Private Hospital, where she was responsible for Nursing, Allied Health, Housekeeping and Catering services.

Prior to joining Tresillian, Danielle was the Director of Nursing at the RPA Virtual Hospital and has been instrumental in the launch of the Wound Care Command Centre as part of the districts Digital Wound Model of Care and the development and launch of the Statewide Virtual Adults program.

Chief Operating Officer Mr Peter Hinrichsen

B.App.Sc (HIM), BHSM, LLB

Peter is an operational leader with over 30 years of diverse experience in providing leadership to tertiary facilities in portfolios including Women and Children's Health, Surgical Services, Medical Imaging, Health Informatics and Corporate Services. Peter has effectively managed significant change and service growth in a rapidly expanding organisation. He has led successful clinical systems implementations, redesign activities and overseen broader facility operations, Quality, Work Health and Safety and Safety and Security portfolios.

Prior to joining Tresillian, Peter was the Director Corporate Services of Nepean Hospital where he spent 8 years leading the portfolio through significant redevelopment and transformation.

Portfolio responsibility for Women and Children's Health and later the onsite Early Childhood and Education Centre has given Peter a strong understanding of the importance of the role of Tresillian as an early parenting service provider.



Celebrating Success!

Retirement of Key Executives

Jenny Smit

In April, 2025 we farewellled Jenny Smit, Executive Director of Clinical Services, (pictured Centre right), who officially retired after 10 years' service.



Marie Dickinson

In June, 2024 we gathered at Tresillian Nepean to farewell Marie Dickinson, Executive Director Governance, Risk & Performance, (pictured left) who retired after 17 years.

Jeff Taylor

In June, 2024 we farewellled Jeff Taylor, Executive Director, Finance (pictured above) who retired after 10 years.

Tresillian Board



Tresillian President Dr Nick Kowalenko

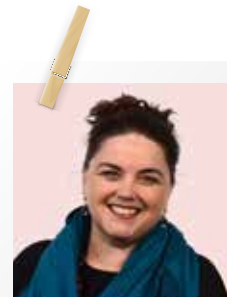
MB, BS, FRANZP, MAICD

Board Director 2003-current.

Elected President November 2013-current.

Member: Tresillian Governance, Audit & Risk Committee 2014-current

Dr Nick Kowalenko is a *Child and Youth Psychiatrist* with senior clinical leadership, research and education roles, and is committed to promoting the emotional health and well-being of families. He's advised governments, consumer organisations and health service leaders about the most effective early intervention strategies to support parenting under stress. Nick is also the *Deputy Chair of Emerging Minds*, an international Faculty member of Zero to Three (USA) and provides multidisciplinary education and training internationally.



Tresillian Vice President Ms Natalie Boyd

BA (Mass Comm)

Board Director 2006-current.

Elected Vice-President November 2015-current

Chair: Tresillian Marketing, Advocacy & Fundraising Committee 2018-current

Natalie Boyd is a management consultant with deep expertise in communications and engagement, advising clients across commercial, government and not-for-profit sectors. Prior to establishing her own consultancy, Natalie held senior executive roles, including Managing Partner, in leading local and global strategic advisory firms. Natalie is passionate about building resilience in individuals, families, and communities, and is proud to support Tresillian in delivering vital services to thousands of Australian families every day. She currently chairs the Marketing, Advocacy & Fundraising Committee, where her professional expertise continues to support the expansion and impact of Tresillian's services. In addition to her role at Tresillian, Natalie is a Ministerial appointee to the NSW Architects Registration Board and a Trustee of the Eryldene Historic House and Garden.



Tresillian Board Director Ms Christina Hall

B. Accounting, CA, GAICD

Board Director: 2025-current

Member: Tresillian Finance, Audit & Performance Committee 2025-current

Christina Hall is a corporate advisory and restructuring executive focused on working with Boards, management teams and other stakeholders to maximise operational, team and financial performance. Having worked as a consultant for PwC both in Australia and the UK and subsequently holding a senior leadership position for a US listed Australian company, leading its multidisciplinary finance team in Sydney, Christina has deep expertise in finance, regulatory and governance matters. Christina's passion for Tresillian stems from her own positive and impactful experience with Tresillian when her three children were young.



Tresillian Board Director Mr Mick O'Driscoll

Project Management (P.Grad.Dip) Dip Arch Tech, GAICD

Board Director: 2019-current

Member: Tresillian Finance, Audit & Performance Committee 2020-current

Mick O'Driscoll is a Head of Infrastructure Development at Calvary HealthCare. He has over 25 years' experience in development in the construction industry across a range of sectors. He has specialised in the health sector over the last 16 years. His expertise in this area are assisting Tresillian in consolidation, growth and creating integrated solutions that enhance the care services provided by Tresillian.

Tresillian Board



Tresillian Board Director Adjunct Associate Professor Troy Trgetaric

B.App.Sc (HIM), M.P.H, Juris Doctor, GAICD

Board Director: 2020-current

Chair: Tresillian Governance & Risk Committee 2020-current

Member: Tresillian Marketing, Advocacy & Fundraising Committee 2021-current

Troy Trgetaric is currently employed as the Executive Director Hospitals for the Royal Rehab Group, where he provides leadership in the management of the Group's hospital services at Ryde and Petersham. Previously he was General Manager of Calvary Health Care, Kogarah and also managed Wagga Wagga Base Hospital for over three years. Troy was also employed for 5 years as Director of Corporate Services at Tresillian. He is also an admitted Solicitor in NSW with skills including the provision of legal advice, strategic workplace relations and hospital redevelopment.



Tresillian Board Director Mr Paul Robson

GAICD, GradDiplIntlBus, BCom

Board Director: 2024-current

Member: Tresillian Governance & Risk Committee 2024-current

Paul Robson is the CEO of MYOB. He has more than 25 years' experience in the global technology sector, with a strong focus on digital transformation. Prior to joining MYOB, Paul held senior leadership positions at high profile technology companies, working across Asia, USA, Europe and the Middle East. He was President of Benchling, a cloud-based platform for biotech based in San Francisco, and spent a decade at Adobe, including President of International, where he played a critical role transforming the organisation's offering to a cloud-based subscription model. Paul is a non-executive director of ASX listed Technology One and an advisory board member of the Australian Industry Group. Paul's first interaction with Tresillian was as a new parent before he joined the Board, drawing on his technology experience to accelerate the organisation's digital presence.



Tresillian Board Director Ms Pamela Longstaff

BEC, LLB, Exec MBA, GAICD, FGIA

Board Director: 2020-current

Member: Tresillian Finance, Audit & Performance Committee 2020-current

Pamela Longstaff is a commercial lawyer and executive leader with 20+ years' experience in roles spanning legal advisory, corporate governance; sustainability; government, industry and regulatory affairs. She is a Fellow of the Governance Institute of Australia, a graduate of the Australian Institute of Company Directors, and currently Company Secretary and Head of Sustainability for Soul Patts, an ASX Listed diversified investment house. Pam has served in leadership roles in health focussed not-for-profit organisations, including Juvenile Diabetes Research Foundation and Glycemic Index Foundation. She received the NSW Premier's North Shore Woman of the Year Award in 2020 recognising her community and fundraising leadership. She has two children and is thrilled to contribute to Tresillian's valuable work supporting new parents.

Event Highlights

State of Origin Fundraiser

Tresillian
Charity Golf
DayState of Origin
FundraiserThe First 1000
Days ConferenceTresillian Team
Building and
Planning Day

On 11th July, 2024, the Tresillian State of Origin lunch was held at Canterbury Leagues Club. Guest speakers included Willie Mason, Darryl Brohman, David Gillespie, Phil Gould, and MC Channel Nine's James Bracey. The event raised significant funds for Tresillian Canterbury.

On 19th November, 2024, The First 1000 Days Conference was staged at the Rex Hotel in the ACT, in partnership with Marymead CatholicCare and Perinatal Wellbeing Centre and generously sponsored by the ACT Government.

On 4th April, 2025, the Tresillian Charity Golf Day, was held at the beautiful Bankstown Golf Course in Milperra. Almost 100 golfers joined us for a fun-filled day of golf and fundraising.

On 20th December, 2025, the Tresillian Team Building and Planning Day was held at Canterbury Leagues Club and proved a hugely successful event.

Tresillian Staff



ABOVE: Our Tresillian Lismore team in the festive spirit. LEFT: Anne Partridge RN (pictured centre), retired in 2024. She held various clinical and leadership positions over 37 years positively changing the lives of many thousands of families.

CHIEF EXECUTIVE OFFICER

Adjunct Associate Professor Robert Mills

EXECUTIVE DIRECTOR CLINICAL SERVICES

Adjunct Associate Professor Jenny Smit (retired April 2025)
Ms Danielle Levis (appointed February 2025)

EXECUTIVE DIRECTOR GOVERNANCE, RISK & PERFORMANCE

Ms Marie Dickinson (retired June 2025)

CHIEF OPERATING OFFICER

Mr Peter Hinrichsen (appointed November 2024)

DIRECTOR MEDICAL SERVICES

Dr Joyce Leong

MEDICAL DIRECTOR PARENT INFANT & EARLY CHILDHOOD MENTAL HEALTH

Dr Alice Dwyer

CLINICAL DIRECTOR PERINATAL INFANT & EARLY CHILDHOOD MENTAL HEALTH

Ms Tanya Bruning

DIRECTOR WORKFORCE, LEARNING & DEVELOPMENT

Mrs Katherine Schaffarczyk

DIRECTOR FINANCE

Mr Jeff Taylor (retired June 2025)
Ms Dushi Goonesekera (appointed September 2024)

DIRECTOR MARKETING & COMMUNICATIONS

Mrs Ann Paton

DIRECTOR QUALITY & SAFETY

Mr Brendan Dunn

DIRECTOR INTEGRATION & PARTNERSHIP

Ms Debrah Davis

DIRECTOR HEALTH INFORMATION

Ms Rachel Plumble

DIRECTOR GUTHRIE EARLY LEARNING CENTRE

Ms Jaclyn Stewart

DIRECTOR CLINICAL OPERATIONS

Ms Leanne Daggar

OPERATIONAL NURSE MANAGER (Metro)

Ms Jeanette Dries

OPERATIONAL NURSE MANAGER (Regional)

Ms Rachael McLean

OPERATIONAL NURSE MANAGER (QEII)

Ms Michelle Stedman
Meet our Metropolitan Staff

NURSING UNIT MANAGERS (Metropolitan sites)

Fran Kenna - Wollstonecraft Residential
Kylie Choi - Wollstonecraft Day Services
Amanda Bamford - Canterbury Residential (Acting NUM)
Kate Mejaha - Canterbury Day Services
Sue Bruhm - Nepean Residential
Angela Drummond - Nepean Day Services
Glenda Goodwin - Virtual Residential Parenting Service
Jenni Leece - Parenting Access Service
Sonja Griggs - Centralised Intake Service

MANAGERS

Dr Anne-Marie Maxwell, Research Manager
Rita Fenech, Executive Support Manager
Pina Filippone, Human Resources Manager
Victoria Hardin, Infection Prevention & Control Manager
Rebecca Love, Governance Support Manager
Alex Caruana, Facilities & Operations Manager
Barbara John, Work, Health & Safety Coordinator
Natalie Jennings, Aboriginal Services & Community Relations Coordinator
Marthese (Marty) Theodoridis, Site Services Supervisor

WORKFORCE, LEARNING & DEVELOPMENT

Katherine Schaffarczyk, Director Workforce, Learning & Development
Anne-Louise Young, Nurse Educator (Nepean)

Emma Monagle, Nurse Educator (QEII)
Hayley Briggs, Nurse Educator (Canterbury)
Janice Wright, Nurse Educator (Regional)
Jessica Masing, Nurse Educator (Regional)
Judy Kotowski, Nurse Educator (Wollstonecraft)
Katherine Cramery, Clinical Nurse Educator (Canterbury)
Kim Lyes, Clinical Nurse Educator (Wollstonecraft)
Mary McDonald, SNF Programme Training Course Coordinator
Nicole Fleming, Nurse Educator (Regional)
Vicki Laing, Nurse Educator (Wollstonecraft)

CLINICAL NURSE CONSULTANTS

Alison Wallbank, CNC Child & Family Health
Ann DeBelin, CNC Perinatal & Infant Mental Health

CLINICAL STAFF

Allison Buckley, Endorsed Enrolled Nurse
Amanda Bamford, Registered Nurse
Amy Crossweller, Registered Nurse
Angela Epstein, Registered Nurse (casual)
Anita Trimboli, Registered Nurse
Anne Kennedy, Registered Nurse (casual)
Bianca Marchio, Registered Nurse
Brianna Mitchell, Registered Nurse
Carina Olivos, Endorsed Enrolled Nurse
Carolynne, Nancarrow, Registered Nurse
Catherine Beer, Enrolled Nurse
Catherine Cunningham, Registered Nurse
Catherine Grinbergs, Clinical Nurse Specialist
Cheryl Madden, Endorsed Enrolled Nurse
Christine Simpson, Registered Nurse
Claire Pascoe, Registered Nurse (casual)
Clare Saw, Registered Nurse (casual)
Claudia Caceres, Registered Nurse (casual)
Danu Wilson, Registered Nurse
Deborah Brittain, Endorsed Enrolled Nurse
Deborah Franklin, Registered Nurse
Debra Ross, Registered Nurse
Eleisha Garland, Enrolled Nurse
Elizabeth Coster, Endorsed Enrolled Nurse
Elizabeth Fulton, Registered Nurse
Elizabeth Hand, Endorsed Registered Nurse
Elizabeth Moore, Registered Nurse
Elizabeth Shields, Clinical Nurse Specialist



ABOVE:
The Country Women's Association (CWA) visited Tresillian Macksville and generously donated toys. Pictured is Nurse Unit Manager, Carol Donnelly (second from right) with members of the local CWA.

RIGHT: Tresillian Griffith Nurse Unit Manager, Lynne Shelton, received a donation of toys from the Warrawidgee Womens Association.

BOTTOM RIGHT: Tresillian Staff in the City to Surf Race.

Ellie Squibb, Registered Nurse
Emma Hoffman, Registered Nurse
Emma Lane, Registered Nurse
Erin Fisher, Registered Nurse
Felecia Nazari, Registered Nurse
Fiona Barker, Registered Nurse
Fiona Cave, Registered Nurse
Fiona Kelly, Registered Nurse
Gail Day, Registered Nurse
Gillian Ross, Clinical Nurse Specialist
Gina Kentzopoulos, Mothercraft Nurse
Heather Kerrigan, Registered Nurse
Heather Taylor, Registered Nurse
Hilary Wolfe, Registered Nurse
Iman Chehab, Registered Nurse
Jamila Hanna, Registered Nurse
Jane Kabanoff, Registered Nurse
Jane Montague, Registered Nurse
Janelle Daley, Clinical Nurse Specialist
Janelle Wright, Registered Nurse
Jasmine Kbar, Registered Nurse
Jasmine Maher, Enrolled Nurse
Jennifer O'Neil, Registered Nurse
Jenny Hulls, Registered Nurse
Jessica Funda, Registered Nurse
Jessica Iglesias, Registered Nurse
Judy Tripodi, Clinical Nurse Specialist
Julie Apps, Mothercraft Nurse
Julie-Anne Murphy, Registered Nurse
Juliet Mazorodze, Registered Nurse

Katharine Findlay, Registered Nurse
Katherine McGovern, Mothercraft Nurse
Kathleen Yarwood, Registered Nurse
Katrina Lumsit, Registered Nurse
Kay Watts, Registered Nurse
Kerry, Gemmill, Registered Nurse
Kerry Harley, Registered Nurse (casual)
Kim Everson, Registered Nurse
Kimberley Lyes, Clinical Nurse Specialist
Kristie Dominguez, Registered Nurse
Kylie Bending, Registered Nurse
Leesa Heslop, Clinical Nurse Specialist
Lisa Bentley, Endorsed Enrolled Nurse
Lorelle Roberts, Endorsed Enrolled Nurse
Louise Eymael, Registered Nurse
Lynn Pickersgill, Registered Nurse (casual)
Mahalia Rivera, Registered Nurse
Majella O'Brien, Clinical Nurse Specialist
Mary Pollard, Mothercraft Nurse
Megan Sena, Clinical Nurse Specialist
Melinda McCarthy, Enrolled Nurse
Melissa Richardson, Enrolled Nurse
Melissa Whitfield, Registered Nurse
Meredith Grant, Registered Nurse
Michelle Dowling, Mothercraft Nurse
Michelle Leto, Registered Nurse
Nada Gannon, Clinical Nurse Specialist
Nalini O'Brien, Registered Nurse
Naomi Blacker, Clinical Nurse Specialist
Nicole Newham, Registered Nurse (casual)
Nicole Tuyman, Registered Nurse
Nisha Wilson, Transition to Specialty Practice
Noeleen Horswell, Registered Nurse (casual)
Pam Burne, Registered Nurse
Parmjit Kaur, Registered Nurse
Patsy Queally, Registered Nurse
Philip Dimech, Registered Nurse
Ramziye (Ream) Srou, Registered Nurse
Reannon Eason, Registered Nurse (casual)
Rebecca Hellstrom, Registered Nurse (casual)
Robyn Murray, Registered Nurse
Rosemary McCowage, Registered Nurse
Sally Price, Registered Nurse (casual)
Sally-Mae Mullane, Endorsed Enrolled Nurse
Sarah Espley, Registered Nurse
Sarah Hurley, Registered Nurse (casual)
Sarah Marsh, Clinical Nurse Specialist
Sarah Oxford, Registered Nurse (casual)
Sarah Scerri, Registered Nurse
Sarah Smith, Registered Nurse (casual)
Seoyeon Park, Registered Nurse
Sharon Sinclair, Endorsed Enrolled Nurse
Shelley Foster, Registered Nurse

Sherrian Price, Registered Nurse (casual)
Stacey Thompson, Registered Nurse (casual)
Sue Adams, Endorsed Enrolled Nurse
Sue Bemmer, Registered Nurse
Sue Priestley, Endorsed Enrolled Nurse
Susan Barabas, Registered Nurse
Susan Quinn, Registered Nurse (casual)
Susan Rebolledo, Registered Nurse
Suzie Murphy, Mothercraft Nurse
Taneil McLachlan, Registered Nurse
Tania Campanale, Registered Nurse
Tania Young, Endorsed Enrolled Nurse
Tracey Bryan, Registered Nurse
Tracy Day, Endorsed Enrolled Nurse
Tracey Hughes, Enrolled Nurse (casual)
Trish Cant, Registered Nurse
Trudy Kelly, Registered Nurse
Wilma Simmons, Endorsed Enrolled Nurse

VIRTUAL RESIDENTIAL PARENTING SERVICE
Glenda Goodwin, Acting Nurse Unit Manager
Denise McCann, Registered Nurse
Kay Watts, Registered Nurse
Jane Kabanoff, Registered Nurse
Meredith Grant, Registered Nurse
Vanessa Hahn, Registered Nurse

CENTRALISED INTAKE SERVICE
Sonja Griggs, Nurse Unit Manager
Gemay Hare, Administration Officer
Jamileh O'Dwyer, Administration Officer
Parul Bhagat, Administration Officer
Pauline Thums, Administration Officer
Rosalie Macklinshaw, Administration Officer
Silvia Wittwer Malisano, Administration Officer
Josephine Palumbo Administration Officer (casual)

PARENT INFANT and EARLY CHILDHOOD MENTAL HEALTH CLINICIANS

Tanya Bruning, Clinical Director, Perinatal Infant & Early Childhood Mental Health
Lynne Ryan, Clinical Psychologist
Madeleine Clark, Clinical Psychologist
Rebecca Hart, Clinical Psychologist
Yvette Aiello, Clinical Psychologist
Shabana Mabood, Clinical Psychology Registrar
Stacey Shoobridge, Psychologist
Jamille Abou Raad, Social Worker
Jane West, Social Worker
Joanna Hawthorne, Social Worker
Kylie Chappell, Social Worker
Lisa Knight, Social Worker
Margaret Booker, Social Worker
Melissa Azar, Social Worker
Sarah Wood, Social Worker
Susanna Lawrence, Social Worker
Julie Vandermaat, Social Worker
Beth Fulton, Occupational Therapist

PSYCHIATRY REGISTRARS

Dr Andrew Brooks
Dr Chloe Boateng
Dr Joshua Darlow
Dr Justin Wang
Dr Lily Chen
Dr Neha Samy
Dr Vivienne Lee
Dr Yesan Jayasekera

HEALTH INFORMATION SERVICE

Ms Rachel Plumbe, Director Health Information
Ms Rizza Mason, Health Information Manager
Ms Susan Mayall, Clinical Nurse Specialist/ Clinical Informatics Officer
Hildegard Withers, Senior Clinical Coder
Janina Esquivel, Clinical Coder

MEDICAL STAFF

Dr Joyce Leong, Paediatrician (VMO) Director Medical Services
Dr Alice Dwyer, Medical Director Perinatal & Infant Mental Health
Dr Anju Aggarwal, General Practitioner (VMO) NSW Metro
Dr Carrie Yang, General Practitioner (VMO) NSW Metro
Dr David Hartshorn, Paediatrician (VMO) NSW Metro
Dr Penny Field, Paediatrician (VMO) NSW Metro
Dr Shereena Sinnayah, General Practitioner

(VMO) NSW Metro
Dr Sue Messner, Psychiatrist (VMO) NSW Metro
Dr Vicki Phan, General Practitioner (VMO) NSW Metro
Dr Wendy Allen, Paediatrician (VMO) NSW Metro
Dr Ashutosh Aggarwal, Paediatrician (Staff Specialist) NSW Metro
Dr Kerry Brown, Paediatrician (Staff Specialist) NSW Metro
Dr Sean Mahon-Daly (Child and Adolescent Psychiatry) NSW Metro
Dr Kristen Pigram, General Practitioner (VMO) NSW Regional
Dr Laura Brien, General Practitioner (VMO) NSW Regional
Dr Rebecca Tallis, General Practitioner (VMO) (locum) NSW Regional
Dr Kate Molinari, General Practitioner QEII ACT
Dr Libby Goodchild, General Practitioner QEII ACT

GUTHRIE EARLY LEARNING CENTRE

Jaclyn Stewart, Director & Early Childhood Teacher
Fiona Zeller, Early Childhood Teacher
Jane LeGras, Early Childhood Teacher
Kellie Morton, Early Childhood Teacher
Rashi Shrestha, Early Childhood Teacher
Erina Namokoyi, Diploma Trained Educator
Karen Meguyer, Diploma Trained Educator
Katerina Kodos, Diploma Trained Educator
Majgan Pakrou, Diploma Trained Educator
Pooi Ching Wong, Diploma Trained Educator
Rosita Van Looy, Diploma Trained Educator
Vivienne (Huimin) Zhang, Diploma Trained Educator
Byung Ok Kim, Certificate III Trained Educator
Chloe Kiriakidis, Certificate III Trained Educator
Mitra Zahraei Mohammadabadi, Child Care Worker

CORPORATE/ ADMINISTRATION SERVICES

Justyna Poniatowski, Executive Assistant
Rizwan Faiz, Education Support Officer, Workforce Learning & Development
Vickie Xanthos, Marketing & Events Co-ordinator
Roxanne Carswell, Graphic Designer & Marketing Co-ordinator
Nancy Currenti, Clinical Support Officer
Tyrone Fegradoe, Accounts Officer
Amarjeet Singh, Finance Assistant
Angela Goodwin, Administration Officer
Brittany Egan, Administration Officer
Gemay Hare, Administration Officer
Jamileh O'Dwyer, Administration Officer
Karen Ingui, Administration Officer
Parul Bhagat, Administration Officer
Pauline Thums, Administration Officer
Rosalie Macklinshaw, Administration Officer
Silvia Wittwer Malisano, Administration Officer

CHEF

Rakesh Bassi (Wallstonecraft)

DOMESTIC STAFF

Alpay Hassan
Cindy Nguyen
Emily Aquino
Filomena De Gois
Isabella Parisi
Janice Whitticker
Jatinder Gill
Josephine Kibanoff
Mary Vella
Napaporn Laosirisamai
Neamul Huq Mazumdar
Siham Yakubian
Susan Morgan
Tae Sung Kim

VOLUNTEERS

Alexandra Amon
Alison Murray
Ann Jarvis
Jacqueline Stene
Jeannie McKenzie
Jennifer Coleman
Jill Jenkins
Leonie Kindred
Louise Surman
Sandy Matthews

Meet our Regional Staff

TRESILLIAN IN ARMIDALE, NSW

Ms Annette Ritchie, Nurse Unit Manager
Helen Murrugh, Registered Nurse
Maree Burr, Administration Officer

TRESILLIAN 2U MOBILE SERVICE (INVERELL), NSW

Leanne Kelly Aboriginal Health Worker

TRESILLIAN IN COFFS HARBOUR, NSW

Monica Carlon, Nurse Unit Manager
Jess Torrens, Registered Nurse
Kristen Potter, Registered Nurse
Lynne Jackson, Administration Officer

TRESILLIAN IN WESTERN (COWRA), NSW

Eleanor Wills, Registered Nurse
Kiara Wilson, Administration Officer

TRESILLIAN 2U MOBILE SERVICE (BATHURST), NSW

Vacant position

TRESILLIAN IN GOULBURN, NSW

Kerry Ennis, Nurse Unit Manager
Rebecca Hallam, Registered Nurse
Stephanie Cleary, Registered Nurse
Patricia Abello-Rodriguez, Administration Officer

TRESILLIAN IN GRIFFITH, NSW

Lynne Shelton, Nurse Unit Manager
Karen Garzoli, Registered Nurse
Melina Tropea, Administration Officer

TRESILLIAN IN CLARENCE (GRAFTON), NSW

Katie Dobbin, Nurse Unit Manager
Annalise Kelly, Registered Nurse
Debbie Metcalfe, Administration Officer

TRESILLIAN IN WESTERN (DUBBO), NSW

Marsha McBroom, Nurse Unit Manager
Jennifer (Louise) Ashton, Registered Nurse
Sally Swan, Registered Nurse
Tanya De Jong, Registered Nurse
Lyndal Walton, Administration Officer

TRESILLIAN IN BROKEN HILL, NSW

Alana Gilius, Clinical Nurse Specialist

TRESILLIAN IN LISMORE, NSW

Tamara Hojer, Nurse Unit Manager
Christine Fyson, Registered Nurse
Nurit Kopolovich Hadad, Registered Nurse
Sandra Neal, Administration Officer



TRESILLIAN 2U MOBILE SERVICE (TWEED), NSW

Suzanne McDonald, Registered Nurse
Victoria Peake, Registered Nurse IBCLC

CHILD AND FAMILY WELLBEING HUB (GRAFTON), NSW

Paul Dutton, Clarence First 2000 Days Program Manager
Julie Vandermaat, Social Worker
Lauren, Kirkland, First 2000 Days Care Navigator
Samantha Duroux, Aboriginal Health Worker, First 2000 Days Care Navigator

TRESILLIAN MACKSVILLE RESIDENTIAL UNIT, NSW

Carol Donnelly, Nurse Unit Manager
Carolyn Healey, Registered Nurse
Janelle Ussher, Registered Nurse
Julie Snowling, Registered Nurse (casual)
Lisa Fisher, Registered Nurse
Megan Carroll, Registered Nurse
Nicole O'Sullivan, Registered Nurse
Samantha Franco, Registered Nurse
Shelley Foster, Registered Nurse
Susan Brown, Registered Nurse
Vicki Keenan, Registered Nurse (casual)
Frances Talbot, Administration Officer (casual)

TRESILLIAN 2U MOBILE SERVICE (MACKSVILLE), NSW

Lesley Mackenzie, Registered Nurse

TRESILLIAN IN SOUTHERN (QUEANBEYAN), NSW

Sarah Escloto, Registered Nurse
Chloe Mayer, Administration Officer



TRESILLIAN IN MANNING (TAREE), NSW

Rachel Starrett, Nurse Unit Manager
Belinda Matthews, Aboriginal Health Worker
Cassandra Emery, Registered Nurse
Cassie Callinan, Registered Nurse
Michelle Lewers, Registered Nurse
Donna Duffy, Administration Officer

TRESILLIAN IN MORUYA, NSW & TRESILLIAN 2U EUROBOBALLA

Kylie Murgatroyd, Nurse Unit Manager
Emma Gooden, Child & Family Health Nurse
Kate Tiller, Child & Family Health Nurse
Maria Robinson, Child and Family Health Nurse T2U
Irene Wilson, Administration Officer

TRESILLIAN IN MURRUMBIDGEE (WAGGA WAGGA), NSW

Karen Griffin, Nurse Unit Manager
Alison Wilkin, Administration Officer

TRESILLIAN IN MUSWELLBROOK, NSW

Kerry Inder, Nurse Unit Manager
Karen Daniel, Registered Nurse
Ruth Rauber, Registered Nurse
Gail Cork, Administration Officer

FORMER STAFF METRO & REGIONAL (1 July 2024 - 30 June 2025)

Alison Thomas, Administration Officer (Moruya)
Allison Weatherall, Registered Nurse (Nepean)
Anne Partridge, Registered Nurse (Canterbury)
Anne Thomas, CSA (Nepean)
Dr Anthony Epstein, Paediatrician (VMO) NSW Metro
Antonella Panuccio, Early Childhood Teacher (Guthrie)
Argie Castello, Administration Officer (Canterbury/Wollstonecraft)
Ashlee Pickering, Administration Officer (Canterbury)
Anna Sukadana, Social Worker (Macksville)
Brenda Jones, Registered Nurse (Nepean)
Brianna Mitchell, Registered Nurse (Wollstonecraft)
Catherine O'Brien, Registered Nurse (Canterbury)
Catherine Sulfaro, Registered Nurse (Wollstonecraft)
Carol Davidson, Registered Nurse (Canterbury)
Carol Lynch, Administration Officer (Cowra)
Danu Wilson, Registered Nurse (Nepean)
Deborah Brooke, Registered Nurse (casual)
Desiree Archer, Registered Nurse (Armidale)
Donna Carr, Registered Nurse (Nepean)
Elisha McKay, CSA (Nepean)
Emily Achurch, Registered Nurse (Muswellbrook)
Gabrielle McGloin, Registered Nurse (Wollstonecraft)
Huimin Zhang, Child Care Worker (Guthrie)
Iveta Horvathova, Administration Officer (Canterbury/ Wollstonecraft)
Jane Williams, Registered Nurse (Canterbury)
Janelle Ye Hang, Registered Nurse (Canterbury)
Jazmyn Cunningham, Enrolled Nurse (Wollstonecraft)
Jeff Taylor, Executive Director Finance
Jennifer Hartman, Registered Nurse (Nepean)
Jenny Smit, Executive Director Clinical Services
Joanne Wright, Administration Officer (Nepean)
Julie Wigmore, Registered Nurse (Goulburn)
Juliette Heafey, Registered Nurse (Wollstonecraft)
Katherine Chapuis, Registered Nurse (Canterbury)
Kelly Stone, Nurse Educator (Wollstonecraft)
Kristen Gridley, Social Worker (Canterbury)
Lana Shaw, Registered Nurse (Wollstonecraft)
Leah Crawford, Social Worker (Taree)
Leigh Halliwell, Administration Officer (Wollstonecraft)
Linda Adeline, Registered Nurse (Wollstonecraft)
Lisa Hardwidge, Enrolled Nurse (Nepean)
Lynn Richards, Administration Officer (Wollstonecraft)
Marie Dickinson, Executive Director Governance & Risk
Melissa Whale, Administration Officer (Wollstonecraft)
Michelle Hudson, Administration Officer (Muswellbrook)
Ming Ji, Registered Nurse (Canterbury)
Nicola Penn, Registered Nurse (Canterbury)

Nicole Pickering, Child Care Worker (Guthrie)
Nouha Kammoun, Registered Nurse (Canterbury)
Paula Rezende Fuschini, Social Worker (Nepean)
Pauline McKeown, Registered Nurse (Nepean)
Rajita Balami, Educator (Guthrie)
Rathi Ramanathan, Social Worker (Grafton)
Rochelle Longhurst, Nurse Unit Manager (Cowra)
Selin Ozbek, Psychologist (Nepean)
Sharon Donaldson, Registered Nurse (Canterbury)
Simmy Coronel, Registered Nurse (Taree)
Sue Mansfield, Registered Nurse (Canterbury)
Sujan Tamang, Administration Officer (Canterbury)
Tameka Wade, Registered Nurse (Nepean)
Valerie Crosa, Child Care Worker (Guthrie)
Veronica Crosa, Administration Officer (Wollstonecraft)
Viorica Abbanah, Child Care Worker (Guthrie)
Dr Vivienne Tedeschi, General Practitioner (VMO) (locum) NSW Regional
Yongcui Ma, Registered Nurse (casual)

Meet our Staff in Canberra, ACT

TRESILLIAN QEII FAMILY CARE, ACT

MANAGEMENT & ADMINISTRATION STAFF
Michelle Stedman, Operational Nurse Manager
Ashlee Perry, Nurse Unit Manager
Madeleine Hornby, Access & Allocation Coordinator/ Quality & Safety Officer
Norma Taylor, Payroll Officer
Divya Hadiya, Administration Officer
Shelby Roberts, Administration Officer

MEDICAL STAFF

Dr Kate Molinari, General Practitioner
Dr Libby Goodchild, General Practitioner
Dr Kate Kalloniatis, General Practitioner (locum)

ALLIED HEALTH STAFF

Lisa Knight, Social Worker

WORKFORCE, LEARNING & DEVELOPMENT

Emma Monagle, Nurse Educator (QEII)

CLINICAL STAFF

Jane Barnett, Registered Nurse/ Registered Midwife
Karen Ashleigh, Registered Nurse/ Registered Midwife (casual)
Kerry Harley, Registered Nurse/ Registered Midwife (casual)
Sally Muddiman, Registered Nurse/ Registered Midwife (casual)
Sharlene Sheehan, Registered Nurse/ Registered Midwife (casual)

Ada Ochayi, Registered Nurse
Carole Vogel, Registered Nurse
Jivan Kaur, Registered Nurse (casual)
Karina Novak, Registered Nurse
Kristi Hermann, Registered Nurse
Lisa Thow, Registered Nurse
Paddy Winslade, Registered Nurse
Rebecca Hallam, Registered Nurse (casual)
Rebecca Love, Registered Nurse
Shizue Koma, Registered Nurse (casual)
Stephanie Smith, Registered Nurse
Susan Hewson, Registered Nurse (casual)
Tanya Fuller, Registered Nurse
Winnie Wanjohi, Registered Nurse
Pierina Lucchesi, Registered Midwife (casual)
Bernadette Reardon, Enrolled Nurse
Dimple Jina, Enrolled Nurse
Jenna Coelli, Enrolled Nurse
Josephine Green, Enrolled Nurse
Pema Choden, Enrolled Nurse

CLIENT SERVICES ASSISTANTS (Housekeeping and Food Services)

Dijana Kulic
Frosso Papadogiannis
Rajendra Ayer
Tijan Manandhar
Chencho Zam (casual)
Debbie Ogwu (casual)
Syeda Begum (casual)

FORMER STAFF ACT (1 July 2024 - 30 June 2025)

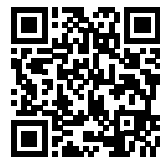
Anna Kotini, CSA (casual)
Annie Schofield, Registered Nurse/ Registered Midwife (casual)
Christine Patterson, Registered Nurse/ Registered Midwife (casual)
Dr Gillian Riley, General Practitioner (locum)
David Pearce, CSA
Debbie Tibbles, Administration Officer
Ebony Barnes, Registered Nurse
Geniene Zachariah, Registered Nurse
Gina Essuman, Registered Nurse
Isabella Robinson, Administration Officer
Janette Baker, Corporate Support Services Supervisor
Jessica Rushbrook, Enrolled Nurse
Keelin Howe, Registered Nurse
Dr Labdhi Mehta, General Practitioner (locum)
Mary Ellen Hirst, Registered Nurse/ Registered Midwife
Melissa Ryan, Centre Manager
Natalie Flegg, Registered Nurse/ Registered Midwife
Renee Lancaster, Administration Officer
Sonja Mingay, Administration Officer
Sue Travis, Registered Midwife (casual)

Tresillian Canterbury Staff celebrating NAIDOC Week.



Even a small donation
can make a big
difference to a family
in need of support
and parenting advice.

DONATE TODAY



tresillian.org.au/donate



Head Office

Tresillian Canterbury
McKenzie Street Belmore 2192
t: (02) 9123 8800
e: tfcc-marketing@health.nsw.gov.au

Tresillian Family Care Centres are located in:

NSW: Armidale, Broken Hill, Canterbury,
Coffs Harbour, Cowra, Dubbo, Grafton,
Griffith, Goulburn, Lismore, Macksville,
Moruya, Muswellbrook, Nepean,
Queanbeyan, Taree, Wagga Wagga, Wollstonecraft
ACT: Curtin **TAS:** Launceston

Tresillian 2U Mobile Early Parenting Services

Bathurst, Inverell, Mid North Coast,
Eurobodalla, Tweed, Queanbeyan

**Need help with your baby?
Call our friendly nurses on the**

Tresillian Parent's Help Line

FREECALL 1300 272 736

In Tasmania

**FREECALL 1300 827 282
1300 TAS BUB**

tresillian.org.au

